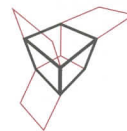


# at the Museum



MITmuseum

265 Massachusetts Avenue  
Cambridge, MA 02139  
(617) 253-4444  
<http://web.mit.edu/museum>

Calendar | November/December 2003

## Exhibitions & Programs

### Main Exhibition Center

265 Massachusetts Avenue  
Closed Monday   
Tuesday-Friday 10:00am – 5:00pm  
Saturday and Sunday 12:00 – 5:00pm  
Admission: Adults – \$5; students, children under 18, and seniors – \$2; children under 5 and MIT ID holders – free.

#### The ZENetic Computer: The Work of Naoko Tosa

Combining Buddhist principles with images from traditional Japanese culture, Naoko Tosa, a visiting scholar at MIT, and her collaborator Seigo Matsuoka, a director at Editorial Engineering Labs in Tokyo, present an interactive experience that inspires visitors to create their own pictures and stories on a large rice paper screen, while learning about Zen, Japanese art, and themselves.

■ Through November 13

#### Hub of the Air Universe: A Century of Flight in Massachusetts **NEW!**

To celebrate the centennial of the Wright Brothers' first heavier-than-air powered flight, the Museum showcases the Massachusetts aviation community—the individuals, institutions, and inventions—that helped make the airplane a vital technology in our daily lives.

■ November 14 - July 3, 2004

### MIT Museum's Hart Nautical Gallery

55 Massachusetts Avenue  
Monday-Sunday 9:00am – 8:00pm  
Admission: Free   
Directions: Located in Building 5 of the MIT campus at 55 Massachusetts Avenue.

#### Deep Frontiers: Ocean Engineering at MIT

World pioneers in the ocean sciences, MIT's Ocean Engineering Department devotes its human and technological resources to developing systems for the wise use and preservation of our ocean planet. *Ongoing*

### Main Exhibition Center

#### Mind and Hand: The Making of MIT Scientists and Engineers

Experience firsthand what an MIT education is really like.

#### Robots and Beyond: Exploring Artificial Intelligence @ MIT

The world of AI at MIT is filled with the likes of Cybernetic Turtle (1951), Minsky's Arm (1968), Instrumented Screw Driver (1993), Spring Turkey (1994-96) Pebbles (1996), Cog's Head and Arm (1997-98), and Kismet (1993-2000).



#### Holography: The Light Fantastic

Eye-popping works drawn from our holography collection—the world's largest—that illustrate the artistic and scientific facets of the medium.

#### Flashes of Inspiration: The Work of Harold Edgerton

A multi-media celebration of the life and work of Harold "Doc" Edgerton, the MIT legend who was dedicated to making the invisible visible.

#### Gestural Engineering: The Sculpture of Arthur Ganson

Stop, look, and laugh—ingenious, philosophical, and witty kinetic sculptures by a self-described cross between a mechanical engineer and a choreographer.

## ongoing exhibits

► **MARK YOUR CALENDARS: MIT Museum now offers free admission on the third Sunday of each month.**

### HOLIDAY GIFTS for curious minds

Think MIT Museum: You'll find out-of-the-ordinary items at affordable prices, including:

#### Toobers & Zots!

The ever-popular creative toy, developed by Arthur Ganson, whose ingenious kinetic works grace the *Gestural Engineering* gallery, is the perfect gift for sculptors and engineers of all ages!

Browsers always welcome  
Museum admission not required

### MIT Museum's Compton Gallery

77 Massachusetts Avenue  
Monday-Friday 9:30am – 5:00pm  
Admission: Free   
Directions: Located in Building 10 of the MIT campus at 77 Massachusetts Avenue. Walk down the "Infinite Corridor" and turn left at the central atrium.

#### Knowing Where to Stand: Photographs by Anne Whiston Spirn

What does landscape tell us? Spirn, professor of architecture and planning and award-winning author and landscape architect, uses photography in her research on landscape as a form of language. Her 45 color works show how photography is a way to read landscapes more deeply. See related lectures, November 12 and December 10, on reverse side. For images and info, visit <http://web.mit.edu/spirn/www/photo.htm>

■ Through January 30, 2004

### FRONT PAGE SPOTLIGHT

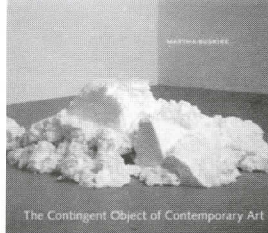
#### Massachusetts Takes Wing

When Orville and Wilbur first flew 100 years ago, the airplane was only a curiosity. Gradually aviation evolved from spectacle to system. A disproportionate number of the world's pioneering figures in the field from

Marking the centennial of the first heavier-than-air flight, **Hub of the Air Universe: A Century of Flight in Massachusetts** highlights artifacts, artwork, and images, many never before on display, from the MIT Museum's

"The exhibition provides an intimate and evocative look at aviation through the lens of Massachusetts and MIT," states Deborah Douglas, curator of science and technology and aviation history specialist. "Imagine yourself walking into the





## Art Talk

Martha Buskirk, assoc prof of art history & criticism at Montserrat College of Art, discusses her book "The Contingent Object of Contemporary Art." Reception: 6:30pm, Bartos Theater. 617/253-4680

## 2 Thurs

### Chapel Concert

Baroque music from Bayreuth: the music of Kleinknecht. Na'ama Lion, baroque flute; Julia McKenzie & Laura Gulley, violins; Sarah Freiberg, cello; Michael Sponseller, harpsichord. 12noon, Chapel.



### Women's Chorale Rehearsal #1

Open to all women in the MIT & Harvard communities. New members welcome until Oct 16. 7:45-10pm, Emma Rogers Rm (10-340). 617/253-1614

## 2-3 Thurs-Fri



### Natyanjali

MIT Natya's Evening of Indian Classical Dance. \$7, \$5 MIT. 7:30pm, Kresge Little Theater. E-mail natya-exec@mit.edu

## 3 Fri

### Museum Closing

"Views Abroad: Architects on Tour, 1889-1896." Drawings by 5 American architects from their study tours of Europe in the 1880s & 1890s. See over for Museum info.

## 4 Sat

### Sidney-Pacific Exhibit/Sale

Works by MIT students. Part of social event which includes BBQ & dance party. 4-8pm, Sidney-Pacific Grad Student Dorm. E-mail ritsaad@mit.edu.

necessary. For ages 18 & over. Registration required. \$50. 1-4pm, Museum. 617/253-5927

## 6 Mon



### "Illuminating the Mirror"

Reflections on Waterfire-talk by installation artist/sculptor Barnaby Evans. Respondent: Margaret Crawford, Prof of Urban Design & Planning Theory, Harvard Grad School of Design. 5:30pm, Rm 10-485. 617/253-7323

## 7 Tues

### Architecture Lecture

"Can a European Understand the American City?" by Joseph Rykwert, historian, U of PA. 6:30pm, Rm 10-250. 617/253-7791

## 8 Weds

### Pianist Behind Desk

Artists Behind the Desk Concert by jazz pianist Bob Toabe, deck hand, Athletics. 12-1pm, Killian Hall. 617/253-1712

### Chicks Make Flicks

Laura Bernieri, founder of Harvard Square Screenwriter's Group, assoc producer for "Squeeze" & co-producer of "Next Stop Wonderland" will screen & discuss "Next Stop Wonderland." 7-10pm, Rm 4-270. 617/253-8844

## 9 Thurs



### Guitar in Chapel

Joshua Millard, guitar. Albeniz, Dowland, Piazzolla & Brouwer. 12noon, Chapel.

## 10-12 Fri-Sun



### Great Glass Pumpkin Patch

Handblown glass pumpkins, created by artists from the MIT Glass Lab. Reception-Oct 10, 5pm. Sale (rain/shine)-Oct 11 & 12, 10am-5pm, Kresge Oval. 617/253-5309

Shawna Shirodkar (harmonium), Seema Shirodkar (harmonium). General-\$18 or \$10 students; Members-\$14 or \$10 students. 4pm, Rm 10-250, 617/258-7971

## 15 Weds

### Object Lesson

Preserving the Paper Document. Kurt Hasselbalch, curator, Hart Nautical Collection. Brownbag lunch; refreshments provided. 12-1pm, MIT Museum. 617/253-4444

### Arts Colloquium

MIT faculty & arts staff invited to hear composer Elena Ruehr, of Music & Theater Arts speak on her work. Hors d'oeuvres served. 5-7pm. Reservations required. Contact Michelle Hinkle (617/253-9821 or mdhinkle@mit.edu) by Oct 10.

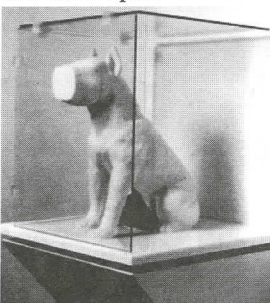


## 16 Thurs

### Biava String Quartet

Recent grads of the Cleveland Institute of Music currently in the Professional String Quartet Training Program at the New England Conservatory of Music. 12noon, Chapel.

### List Show Opens



"Michael Joo." First survey of the works of NY based-artist consists of more than 35 works created from 1992-2003, including sculpture, video, works-on-paper, & the world premiere of "Circannual Rhythm (pibloktok), 2003," a three-screen digital video installation shot on location in Alaska. Through Jan 6. List Visual Arts Ctr. Tues-Thurs & Weekends 12-6pm; Fri 12-8pm; closed holidays. 617/253-4680

## 16 & 23 Thurs

### Whispering Touch

InventioNibble program w/ interactive sculpture that amplifies the smallest sensation. Free w/admission (See Ongoing listing over). 3-5pm, Museum. 617/253-4444



### Family Weekend Concert

"Jazzphonic Dances"- MIT Wind Ensemble, & Festival Jazz Ensemble. Frederick Harris, director. Bernstein, Joplin, Dana Wilson, Ellington, Mingus & others. 8pm, Kresge Aud.

## 18 & 25 Sat

### Tiptoes & Whispers

InventioNibble program to create a sensor that detects the tiniest movements & sounds. \$15/2-person team. Children under 16 must be accompanied by an adult team member. Pre-registration required. 1-3pm, Museum. 617/253-5927

## 20 Mon

### "The Architecture of Events"

Event Places Symposium-Jim Law, exec director, Mayor's Office of Special Events, Chicago. Respondent: Harvey Cox, Hollis Prof of Divinity, Harvard Divinity School. 5:30pm, Rm 10-485. 617/253-7323



Taste of Chicago Grant Park

## 21 Tues

### Architecture Lecture

"Meditations: New Projects." 17th Arthur H. Schein Memorial Lecture by Ricardo Legoretta, architect, Mexico City. 6:30pm, Rm 10-250. 617/253-7791

## 22 Weds

### Ballroom Dance Expo

Artists Behind the Desk Program. Ballroom dancing by MIT staff members of the MIT Ballroom Dance Team. 12-1pm, Killian Hall. 617/253-1712

### Kiki Smith Talk

Page Hazlegrove Lecture on Glass by Smith, known for works inspired by human anatomy & biological processes in materials as diverse as fabric, glass, bronze, paper, & wax. 7pm, Wong Aud. 617/492-3710



KIKI SMITH

Shabalin, violin. J. S. Bach. 12noon, Chapel.



### Authors of Asian Diaspora

Authors Shirley Geok-lin Lim & Jessica Hagedorn presentation for Beyond US Multiculturalism? Asian Diasporas & New Transnational Cultures symposium. Opening remarks by Prof Philip Khoury, dean, School of Humanities, Arts & Social Sciences; moderated by Prof Isabelle de Courtivron. 7pm, Rm 10-250. 617/253-4771

## 24 Fri

### MIT Symphony Orchestra



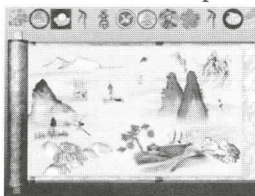
Dante Anzolini, director. Giovanni D'Aquila, World Premiere; Beethoven's Symphony

No. 6; Stravinsky's "Rite of Spring." \$5. 8pm, Kresge Aud.

### Authors of Asian Diaspora

Evening w/authors Jhumpa Lahiri & Lan Samantha Chang. Intro by Writer-in-Residence William Corbett; moderated by Min Song. See 23 Thurs above. 7pm, Rm 10-250. 617/253-4771

### Interactive Exhibit Opens



"The ZENetic Computer: The Work of Naoko Tosa." Naoko Tosa, visiting scholar at MIT & collaborator Seigo Matsuoka create an interactive experience that inspires Museum visitors to create their own pictures & stories on a large rice paper screen, while learning about Zen, Japanese art & themselves. Through Nov 13. MIT Museum (see over for info).

## 25 Sat

### Roundtable Discussion

Beyond U.S. Multiculturalism? Asian Diasporas & New Transnational Cultures. Moderated by Shirley Geok-lin Lim. 1-3:30pm, Rm 4-237. 617/253-4771



Part of the Artist Behind the Desk Series



Massachusetts Institute of Technology



# November Arts

## 1 Sat

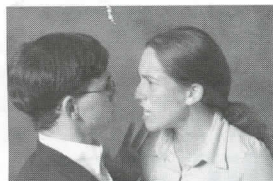


### Artist Talk/Reception

"Michael Joo." Talk 2:30-3:30pm; Reception 4-6pm, List Visual Arts Ctr. See All Month (over) for List Ctr & exhibition info.

### "Antigone"

MIT Shakespeare Ensemble production of adaptation by Jean Anouilh, directed by Elizabeth Jochum. \$8, \$6 MIT/Wellesley students. 8pm, Kresge Little Theater. 617/253-2903 or e-mail ensemble-request@mit.edu



Max Goldman '04 as Creon and Lisa Messeri '04 as Antigone. Photo by Clay Ward

## 2 Sun

### Brunch/Concert

Artist Behind the Desk Series: Silverwood Trio. \$30/person (cash bar). 11am-2pm, Endicott House (80 Haven St., Dedham). 781/251-6356 or e-mail snasser@mit.edu



### "Winning Hand" Folds

"The Winning Hand: Images from the MIT Radiation Laboratory Negative Collection" closes. MIT Museum. See over for Museum info.

## 3 Mon

### Filmmaker Talks

"Film Making on the Margins: Vulnerable Women & Girls in South Africa." Talk by Julie Frederikse, who will also screen a film & lead discussion. 3pm, Rm 14E-304. 617/253-8844

### Aga Khan Program Talk

"Bourdieu's Battle in Algeria: War, Ethnoscology, Photograph" by Dr. Helene Lipstadt, MIT research affiliate. 5:30-7:30pm, Rm 56-114. 617/253-1400 or e-mail akpiarch@mit.edu

## 4 Tues

### Architecture Lecture

"Work of Anthony Hunt Associates" by Tony Hunt, structural engineer, U.K. 6:30pm, Rm 10-250. 617/253-7791

## 6 Thurs

### Chapel Concert

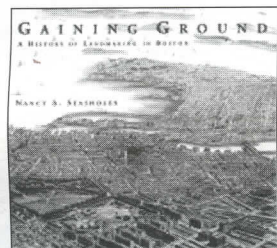
Duo Seraphim: "Sweet was the Song the Virgin Sung." Melissa Fogarty, soprano; Jennifer Griesbach, harpsichord. Frescobaldi, Merula, Purcell, Luzzaschi, Monteverdi. 12noon, Chapel.



Melissa Fogarty  
Photo by Brian Edwards

### Art Talk

"The Invention of the Metropolis: Utopian Thinkers & the Modernization of Paris 1830-1848." Talk by Antoine Picon, Harvard. 6pm, Rm 3-133. 617/258-8438 or e-mail adeveau@mit.edu



### authors@mit

Nancy S. Seasholes, "Gaining Ground: A History of Landmaking in Boston." 6pm, Rm E25-111. 617/253-5249 or e-mail books@mit.edu

## 6-8 Thurs-Sat

"Antigone" Closes  
See 1 Sat left.

## 7 Fri

### Multicultural Scene Night

Black Theater Guild. Time/place TBA. E-mail btg-exec@mit.edu

## 7-9 Fri-Sun

### "Ruddigore" Opens

MIT Gilbert & Sullivan Players. \$10; \$8 MIT community, students, srs; \$6 MIT students. 8pm (except 2pm on Sun), Sala de Puerto Rico. 617/253-0190, e-mail savoyards-request@mit.edu



## 11 Tues



einstein's little homunculus

### Contra Dance

MIT Folkdance Club Peace Party. Live music by einstein's little homunculus w/caller Ann Cowan. \$5, MIT & Wellesley students free. 8-10:30pm, Lobby 13. 617/354-0864 or e-mail fdc-request@mit.edu

## 12 Weds

### "Calder's Circus" Folds

1927 film by Alexander Calder of miniature circus w/tiny wire performers. Media Test Wall, Whitaker Bldg 56. 617/253-4400



### Silverwood Trio

Artists Behind the Desk Concert w/Cindy Wooley, research support assoc, Biology. 12-1pm, Killian Hall. 617/253-1712

### Gallery Talk

"Knowing Where to Stand." Prof Anne Whiston Spirn discusses photography as a way of knowing & as a medium of expression. 12:15-1:15pm, Compton Gallery. 617/253-4444



Fields of Force,  
Lines of Power.  
Glen Loy,  
Scotland. 1978  
© Anne Whiston  
Spirn

### Chicks Make Flicks

Patricia Alvarado, producer for La Plaza, a Latino interest series on WGBH, will screen "Getting To Fenway" & "El Tiente: A Red Sox Story." 7-10pm, Rm 4-270. 617/253-8844

## 13 Thurs

### Leonora Quartet

Bartok & Mozart. 12noon, Chapel.

### Inventor's Spotlight

## 13 Thurs

### Communication Requirements

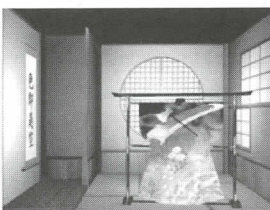
"The Harvard Study of Undergraduate Writing." Lecture by Nancy Sommers, Sosland director, Expository Writing, Harvard. 4-5:30pm, Rm 1-190. 617/253-7894

### Women's Studies Forum

"The Coffeehouse: Architecture & Sociability in the Mediterranean City." Talk by Heghnar Watenpaugh Tea at 4pm, Talk at 4:30pm, Rm 14E-304. 617/253-8844

### authors@mit

Bill Mitchell, "ME++: The Cyborg Self & the Networked City." 5:30pm, Bartos Theater, 617/253-5249 or e-mail books@mit.edu



### Exhibit Closes

"The ZENetic Computer: The Work of Naoko Tosa." Naoko Tosa, visiting scholar at MIT & Seigo Matsuoka create an interactive experience that inspires visitors to create their own pictures & stories on a large rice paper screen, while learning about Zen, Japanese art & themselves. MIT Museum. See all month (over) for info.

## 13-15 Thurs-Sat

Student-Written One Acts Dramashop. 8pm, Kresge Little Theater. 617/253-4720 or e-mail ds\_officers@mit.edu

### "Ruddigore" Closes

See 7-9 Fri-Sun above except 2pm & 8pm on Sat.

## 14 Fri



### MIT Festival Jazz Ensemble

Frederick Harris, director. "Beyond Boundaries" — music

## 15 Sat

### MIT Chamber Chorus

William Cutter, director. Monteverdi, Harbison, Bach. 8pm, Kresge Aud.

### Invention Studio

Microscopic Movements. Use a computerized microscope to take a look at tiny life forms & learn how microscopic activity can trigger movement. \$15/2-person team (includes Museum admission). Children under 16 must be accompanied by an adult team member. Pre-registration req'd. 1-3pm, MIT Museum. 617/253-5927

## 16 Sun

### Gamelan Concert

Gamelan Galak Tika, Evan Ziporyn, director. Galak Tika joined by MIT's African drumming group, Rambax, for premiere of new work by Galak Tika co-founder Desak Made Suarti Laksmi. Featuring Senegalese master drummer Lamine Toure. \$8, \$4 students/srs, MIT community & children under 12 are free. 4pm, Kresge Aud. 617/452-2302

## 17 Mon

### "Designing Celebrations"

Event Places Symposium by Karin Bacon, president/creative director, Karin Bacon Events, Inc. 5:30pm, Rm 10-485. 617/253-7323

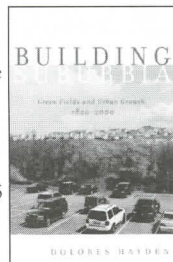
## 18 Tues

### Architecture Lecture

"Bubbles Blue & Red Against the Desert" by Peter Cook, architect, Bartlett School, London. 6:30pm, Rm 10-250. 617/253-7791

### "Building Suburbia"

Off-campus talk by author Dolores Hayden. 7pm, Cambridge Public Library, Central Square Branch (45 Pearl St.). 617/253-8844



## 19 Weds

### Object Lesson

The Graphic Language of Architecture. Gary Van Zante, curator of architecture & design, spotlights drawings