



International Symposium on
Intelligent Environments

**Improving the quality of
life in a changing world**

5-7 April 2006
Cambridge – United Kingdom

Proceedings

International Symposium on Intelligent Environments

**Improving the quality of life in
a changing world**

5 - 7 April 2006 - Cambridge, UK

Table of Contents

Preface	7
Conference Chairs	9
Program Committee	9
Keynote Speakers	11
Donald A. Norman <i>Cautious Cars and Cantankerous Kitchens: Intelligent Automation Enters Everyday Life</i>	11
Ryohei Nakatsu <i>Intelligent Environments: Entertainment and Robotics</i>	11
Naoko Tosa <i>Art & Technology New wave: Inter-Cultural Computing</i>	12
Francois Pachet <i>Flexible Interactions with Music</i>	12
Expert Panels	13
Liam Bannon, Neville Moray, Don Norman, Mark Rouncefield <i>The Cognitive Life of Things: Intelligent Tools for the Future</i>	13
Papers	15
Session 1: Concepts in Human Computer Interaction.....	17
G. Cockton <i>Challenges and Opportunities for Evaluating Intelligent Environments</i>	17
H. Thimbleby <i>Applying Bohm's Ideas in the Age of Intelligent Environments</i>	27
A. S. Taylor <i>Intelligence in Context</i>	35
Session 2: Technological and social infrastructure for the home	45
S. Davidoff, M. K. Lee, J. Zimmerman, A. Dey <i>Socially-Aware Requirements for a Smart Home</i>	45
P. A. Haya, A. Esquivel, G. Montoro, M. García-Herranz, X. Alamán, R. Hervás, J. Bravo <i>A Prototype of Context Awareness Architecture for Aml at Home</i>	49
L. Swan, S. Izadi, R. Harper, A. S. Taylor, A. Sellen, M. Perry <i>Rethinking the "Smart" Home</i>	57

Session 3: How does the infrastructure work?.....	67
M. Tvarožek, M. Adam, M. Barla, P. Sivák, M. Bieliková <i>SPOT-IT: Going Beyond the Vision Loss Boundaries</i>	67
C. Heite, B. Wilms, J. Kemper, P. Resch, P. Schramm, S. Hartwig, S. Jurthe <i>EIBlue - A Self-Contained System for EIB Device Control using Bluetooth</i>	77
Session 4: Why wear?.....	85
S. Duval, H. Hashizume, N. Richard <i>Physiological, Safety, and Belonging Needs: From Wearable Computers to Intelligent Environments</i>	85
M. Jones, G. Bradley, S. Jones, G. Holmes <i>Navigation-by-Music for pedestrians: an Initial Prototype and Evaluation</i>	95
Session 5: Robotics and Intelligence	103
J. E. Young, E. Sharlin <i>Sharing Spaces with Robots: an Integrated Environment for Human-Robot Interaction</i>	103
G. Åberg <i>Exploring Robotics to Stimulate Exercise using the "Carrot on a Stick"- Metaphor</i>	111
L. Hamill, R. Harper <i>Talking Intelligence: a Historical and Conceptual Exploration of Speech-based Human-machine Interaction in Smart Homes</i>	121
Session 6: The problem of design.....	129
M. Wiberg <i>Graceful Interaction in Intelligent Environments</i>	129
L. Terrenghi <i>Shaping Intelligent Environments: the Sign of Design</i>	137
Exhibition	145
A. Akarra, E. Akarra <i>Capturing the Miracles of Fetal Movement</i>	147
R. Aipperspach, K. Anderson, A. Woodruff <i>Gathering Intelligence in Domestic Environments</i>	148
P. D. Bamidis, P. Moeller <i>Enabling Psychological Sensing of Aroma Enhanced Human Computer Interaction</i>	149
A. Camurri, C. Canepa, G. Volpe <i>Expressive Tangible Acoustic Interfaces</i>	150
A. Darbari, P. Agrawal <i>Enliven Photographs: Augmenting Life to Photographs</i>	151
J. Fahlén, E. Frécon, P. Hansson, A. Avatare Nöu, J. Söderberg <i>Clock Interface for Location and Presence</i>	152

..... 67	S. Galice, V. Legrand, M. Minier, J. Mullins, S. Ubéda <i>Trust Ambient Community: History Based Framework</i>	153
..... 67	F. Giglietto, L. Rossi <i>Makhine: Mapping Knowledge in an Heterogeneous Intelligent Environment</i>	154
..... 77	G. Hutzler, B. Gortais, P. Joly, Y. Orlarey, J.Zucker, S. Otmane, L. Y. Shang <i>MACHINE: Multimodal and Adaptive Computer-Human Interaction in Networked Environments</i> ...	155
..... 85	A. Komninos, A. Komninos, J. Newman, P. Barrie <i>me-Commerce: Predictive Personal Shopping Infrastructures</i>	156
..... 85	I.E. Lukashovich, I.A. Kirillov, E.B. Rossinsky, A.V. Makarov, S.V. Klimenko <i>Virtual Reality-based Intelligent Environment for Industrial Safety and Environmental Security</i>	157
..... 95	A. F. Monk, M. Blythe, K. Doughty <i>Telecare: (somewhat) Intelligent Environments in Real use</i>	158
.. 103	I. Mulder, H. ter Hofte, R. Otte, P. Ebben <i>Collecting Experiences in Context with Xensor for Smartphone</i>	159
.. 103	P. Piwek, R. Power, D. Scott <i>iHomeTalk: Conversation Generation for the Home</i>	160
.. 111	M. Tscheligi, W. Reitberger, R. Bernhaupt, K. Mihalic, C. Obermair, M. Obrist, B. Ploderer <i>Enhancing the Reading Experience while Preserving its Magic</i>	161
. 121	G. Vozzi, A. Cisternino, D. Colombo, D. Mazzei <i>Digital Synthetic Skin Sensor</i>	162
. 129	J. C. Witte, L. Gugerty, K. Green, I. Walker, J. H. Brown, K. Davis, S. DeWard, J. Turchi, J. Allen, B. Coughlin, N. Klein, J. Stephens, S. Key, R. Raghavendran, B. Castelloe, T. Highers, J. Pang <i>CREATING AWE - Formulating a Research Process for an Interdisciplinary Effort to Build an Animated Work Environment (AWE)</i>	163
137		
145		
147		
148		
149		
150		
151		
152		

modalities in communications. In 1978, he received Young Engineer Award from the Institute of Electronics, Information and Communication Engineers Japan (IEICE-J). In 1996, the best paper award from the IEEE International Conference on Multimedia. In 1999, 2000 and 2001, Telecom System Award from Telecommunication System Foundation and the best paper award from Virtual Reality Society of Japan. In 2000, the best paper award from Artificial Intelligence Society of Japan. He is a fellow of the IEEE and the Institute of Electronics, Information and Communication Engineers Japan (IEICE-J), a member of the Acoustical Society of Japan, Information Processing Society of Japan and Japanese Society for Artificial Intelligence.

Art & Technology New wave: Inter-Cultural Computing

Naoko Tosa

Project Professor, Media Artist

Academic Center for Computing and Media Studies, Kyoto University, Japan

Naoko Tosa is a Media Artist & Senior Researcher. She is also a guest professor at the graduate school of Science and Technology at Kobe University and a visiting lecturer at Musashino Art University's Department of Media Art & Science. She received a Ph.D. in engineering for Art and Technology research from University of Tokyo. In particular, she focused on the topic of communication and used computers, video and electronics to design art work that relates to the intelligence of emotions, consciousness and unconsciousness. She specializes in the creation of experimental film, video art, computer graphics animation, and interactive arts.

Her recent work includes the Neuro-Baby project, an autonomous computer agent with automatic facial expression and behaviour synthesis that can respond to the human voice through recognizing emotions and feelings.

Her work has been exhibited at the Museum of Modern Art New York, the New York Metropolitan Art Museum, SIGGRAPH, Ars ELECTRONICA, the Long Beach Museum, and other locations worldwide. Her work is also part of the collections at the Japan Foundation, the American Film Association, the Japan Film Culture Center, the Nagoya Prefecture Modern Art Museum, the International Art Museum of Japan, the O Art Museum, the Toyama Prefectural Museum of Modern Art, and the Takamatsu City Art Museum. In 1996, she received the best paper award from the IEEE International Conference on Multimedia. In 1997, the L'Oreal Grand Prix for research combining art and science awarded her first prize.

Flexible Interactions with Music

Francois Pachet

Senior Researcher

Sony CSL-Paris, France

Francois Pachet is interested in various aspects of music access (listening, browsing) and interaction (performing, active listening). His scientific goals relate to extraction and representation issues, machine-learning, and human-computer interaction. His practical goals are to design new environments for enhancing the music experience. All these projects as well as the projects he conducted before, relate in one way or another to the theme of interestingness (i.e. what makes certain temporal processes interesting). A book explaining why and how is under way.

Expe

The

Forge
memo

Liam E
Profess
Univers

His res
Mediate
user sup
Comput
services
resultin
he plans

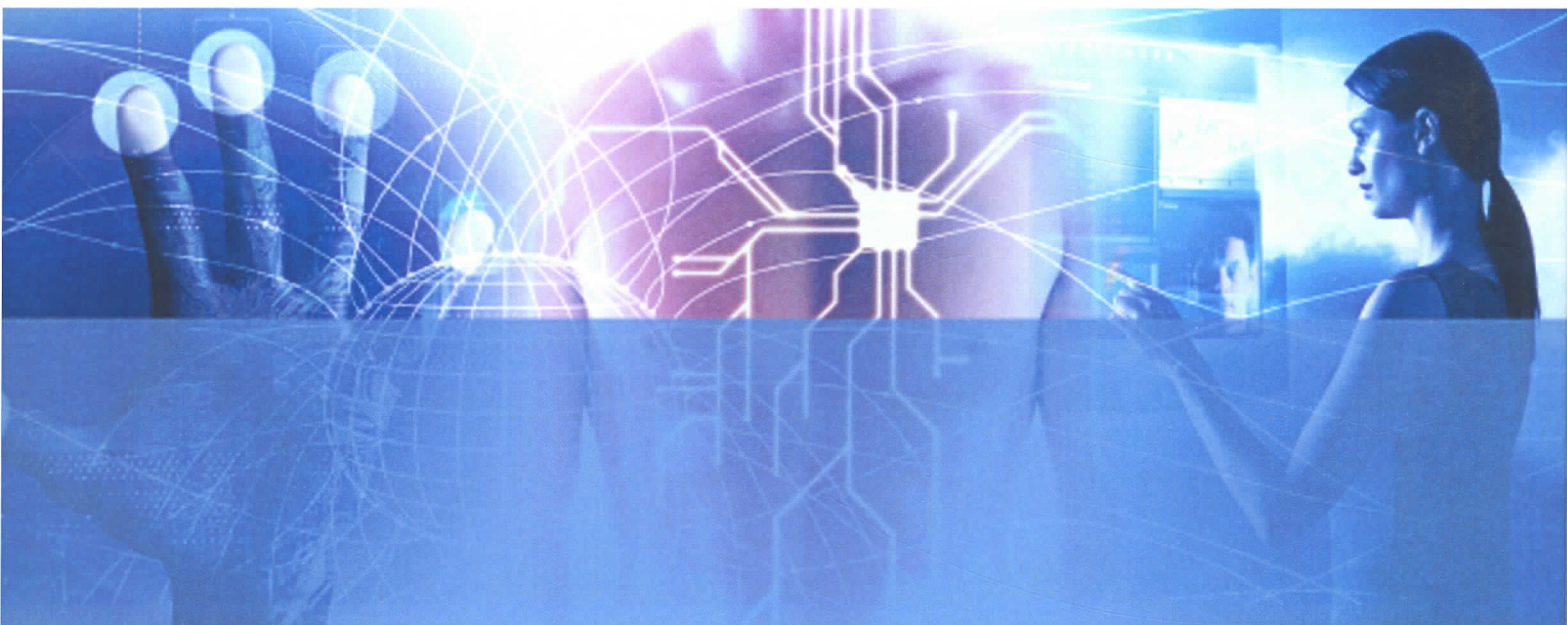
Intellig
human

Neville
Profess
Univers
Fellow
Fellow
Fellow

Prof. M
Human
psycho
Canada
Profess
and ha
Comm
includi
and ac
Advis
system
humar

He is
Societ
award
and th
Small

Internat
5-7 Apr



Information and Contact:

<http://research.microsoft.com/ero/iep/isie06>

Microsoft Research Ltd Roger Needham Building, 7 JJ Thomson Avenue, Cambridge CB3 0FB

ISBN Number: 1-59971-529-5
Ebook ISBN Number: 1-59971-530-9